

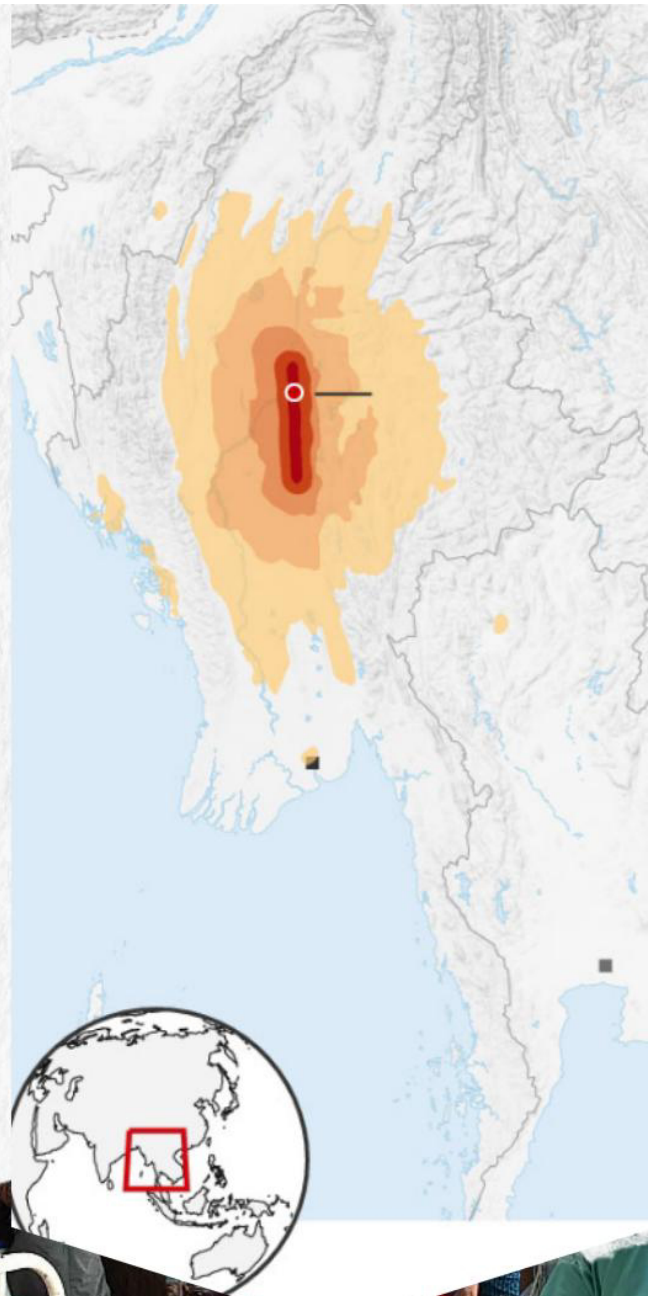
Fascist Military, Natural Disasters & Humanitarian Aid

– March 29, 2025



**FASCIST MILITARY,
NATURAL DISASTERS &
HUMANITARIAN AID**

On March 28 2025, a strong 7.7 magnitude earthquake struck the northeastern part of Mandalay, with its epicenter located in the region. Due to the earthquake, the fascist military junta declared a state of emergency in the six regions (Sagaing, Magway, Mandalay, Bago, Shan, and Nay Pyi Taw).





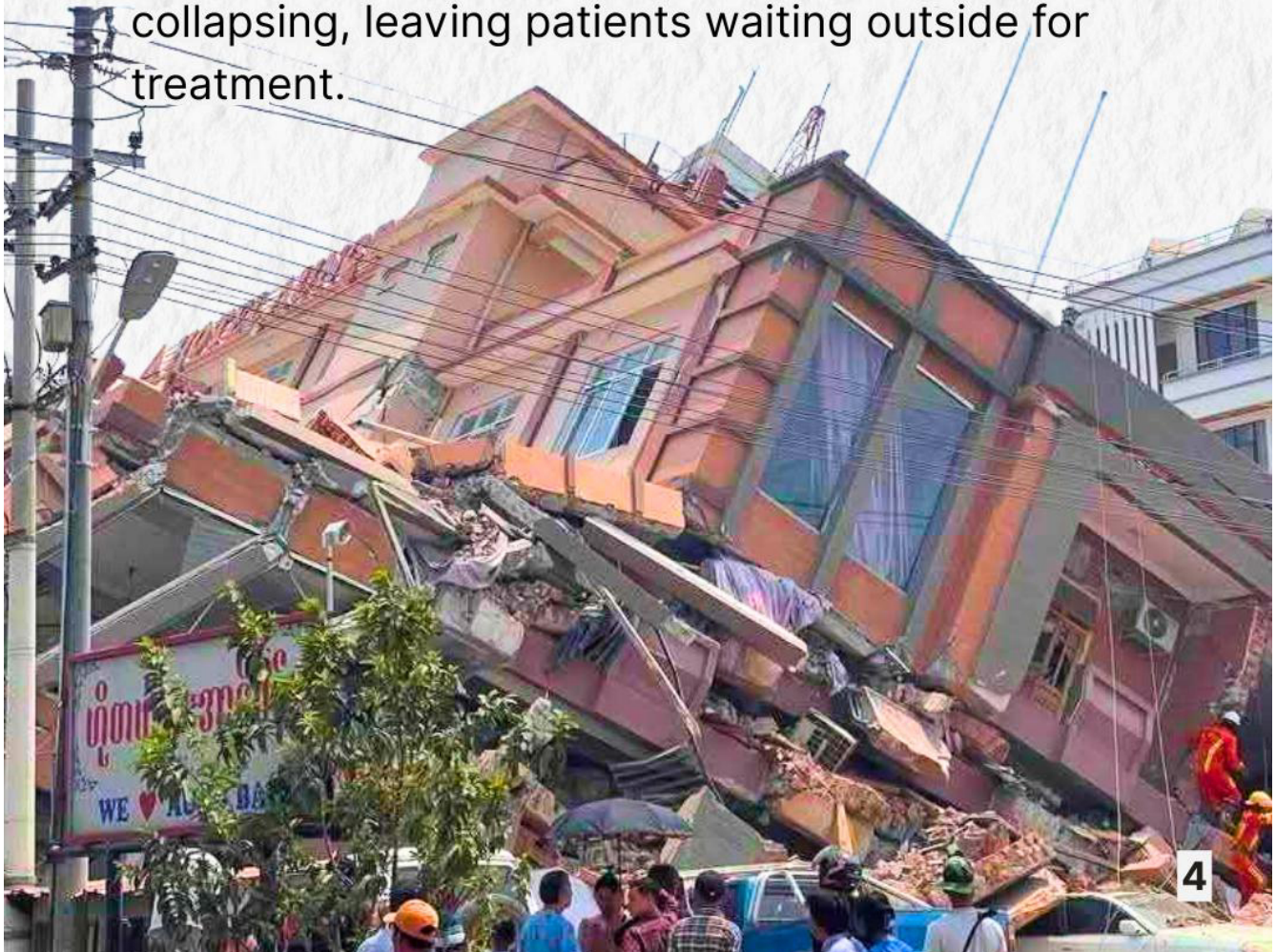
WHAT HAPPENED?

The powerful earthquake with a magnitude of 7.7 caused significant damage in several parts of Burma (Myanmar). The worst destruction and deaths occurred in Mandalay and Nay Pyi Taw. According to initial reports from the military junta, over 1,000 people were killed, and 2,376 were injured within the first 8 hours. In Mandalay and Nay Pyi Taw, where the earthquake struck hardest, phone lines and internet connections were disrupted. Historical sites like the Mandalay Palace and old city walls were also severely damaged. Buildings, including high-rise apartment complexes, homes, and hotels, collapsed in Mandalay, with some entire buildings falling apart. One notable example is the eleven-storied Sky Villa Condo in Mandalay, where the building sank, leaving only seven stories standing.





Many areas in Mandalay suffered heavy damage, including residential neighborhoods. Due to the devastating number of casualties, hospitals in Mandalay are overwhelmed, and they are unable to treat all of the injured. Patients with non-lethal, but major injuries, had to wait in line for treatment. In Nay Pyi Taw, the situation is similar, with a large hospital also collapsing, leaving patients waiting outside for treatment.





FIRES & CONTINUED DAMAGES

As a result of the earthquake, several large fires broke out, exacerbating the damage. For instance, the Mandalay University campus caught on fire, and many neighborhoods in the Sain Pan area were engulfed in flames. In Nay Pyi Taw, the Uttarasiri Hospital also collapsed, and the Lewei, Pyinmana-Taung Nyoh, and Thapyay Kon markets also suffered destruction.





COMMUNICATION & TRANSPORTATION DISRUPTIONS

The earthquake also disrupted critical communication infrastructure, including bridges, railways, airports, and roadways, rendering them unusable. The old Sagaing Bridge, built during British colonial times, was heavily damaged, as was the Duttha Waddy Bridge. On the Yangon-Mandalay railway, tracks were rendered impassable. The highways near Naypyidaw, Mandalay, and Yangon are in ruins. While in Mandalay, groundwater is spraying out of the cracks, and whole roads have collapsed. Mandalay airport and other surrounding airports also sustained severe damage, causing people to gather on the runway as flights were grounded.





RELIGIOUS & CULTURAL DESTRUCTION

The earthquake caused extensive damage to religious sites and places of worship. Over 50 mosques collapsed, and 266 people praying during the last Friday of Ramadan at the mosques lost their lives. The highest death toll happened at “A Mhyout Tan” Mosque, which crumbled and suffocated hundreds to death. There were also dozens of deaths in Yamethin and Tadaoo Townships caused by collapsing mosques.



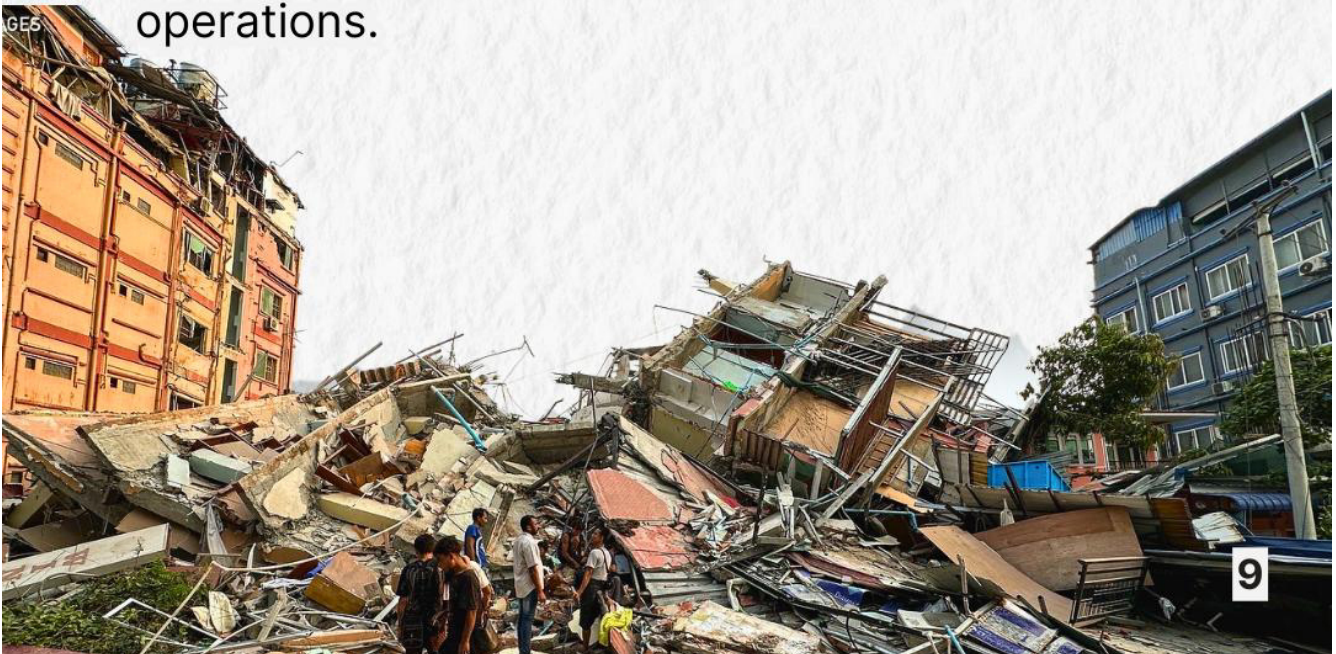


The Muslims in Burma never had the chance to maintain the mosques, let alone build a new one. The Military oppressed minority religions and caused racial and religious conflicts intentionally to distract people from fighting back against the dictatorship. These old and barely maintained mosques easily crumbled into ruins due to natural disasters, causing deaths. The earthquake brought down every structure in its range, despite of which religion they belonged to. This brought devastating destruction to the ancient city of Amarapura, where many pagodas, including the famous ones in the area, were destroyed. In Mandalay, historical sites such as the Shwe Sar Yan, the Mahamuni Pagoda, and several other structures were severely damaged. Additionally, the U Hla Thein Bhimman, where monks were studying, collapsed, killing 3 monks and injuring 41 others.



AFTERSHOCKS & ONGOING THREATS

After the initial earthquake, smaller aftershocks continued to affect southern Burma. Areas in the Bago region experienced aftershocks with a magnitude between 3.0 and 4.0, further shaking the region. As of now, many people remain trapped or injured, and urgent rescue efforts are needed. The military junta has been slow to respond, failing to provide adequate relief and support to those in need. Communication lines, including fiber optic cables, were also severed, complicating efforts to coordinate rescue operations.





In this dire situation, the military junta didn't spare any empathy to the people, refusing to provide evacuation, rescues, aid, and supplies. The government system, whose sole purpose is to protect its people, crumbled in the darkness when its cables were torn up by the earthquake. While civilians were in fear and misery, the military junta used jets and paramotors to bombard and airstrike people in Chaung U and Naung Cho Townships. Despite the cruelty he inflicted on the people, General Min Aung Hlaing now shamelessly claims that Burma needs international humanitarian aid to help the people, but the atrocities committed by his administration and the military reveal that he is indeed an inhumane fascist dictator.





HUMANITARIAN AID & DICTATORSHIP

The Military Junta has a history of mismanagement, outright neglect, and misappropriation of humanitarian aid; 2008 Cyclone Nargis, 2020 Covid-19 Pandemic, 2023 Cyclone Mocha, and every flood and natural disaster. Instead of distributing aid to the people affected by natural disasters, the military junta has always weaponized and taken advantage of the situation to quell dissent, strengthen and consolidate its forces, and further oppress the people into submission.





In the aftermath of 2008 Cyclone Nargis, which of thousands of people and affected 14% of the Burmese population, and just a year after they had violently suppressed the monks who were peacefully protesting (Saffron Uprising 2007), the military's mismanagement of the economy and rampant inflation. Due to rampant corruption and woeful mismanagement, International Aid was not distributed to the people affected by the cyclone, rather, they ended up in sold on the black market for the military's profit. The previous fascist junta was given ample time to prepare for the cyclone but chose to ignore it, resulting in preventable deaths.





The military decided to hold a sham constitutional referendum to swindle the people of Burma and the international community into the path of “reformation” with them still monopolizing state power. Similarly, in the present, they will no doubt seize this opportunity to push for sham elections and try to push for legitimacy in the international arena, and use the aid to bolster their dwindling military supplies.





Beyond that, we must not forget that the current military junta came to power in a coup during a global pandemic by killing, imprisoning, and brutally cracking down on protesters and striking workers. The junta intentionally weaponized the crisis to thin out further dissent, resulting in a devastating second wave with hundreds of thousands of deaths due to oxygen shortage. The military during the 2023 Cyclone Mocha, the military continues to employ its four cuts doctrine in the ethnic revolutionary organizations' controlled territories like Arakan to starve and weaken the people of Arakan. In September of 2024, the military released the rainwater from their dams in Kareni to flood the fields of the people displaced by the ongoing war, to starve them into submission



The governments that have governed Burma since British colonialism have always spent the majority of the tax revenue to fund the army and police. In other words, the money collected from the people has been used to buy weapons of war to oppress, kill the people instead of building infrastructure, education, and social welfare. The military dictatorship is no different. The military junta is solely responsible for the deaths caused during this disaster. It is their neglect, mismanagement, and outright weaponization that led to this tragedy. Every penny that goes to the Myanmar military will just end up as military expenses to further oppress our people. As such, it is in the interest of the oppressed people of Burma to uproot the military dictatorship.



We urge all progressive and democratic forces to stand with the oppressed people of Burma affected by the earthquake.

It is important to send aid and support directly to the people affected.

Long Live International Solidarity
The People United Will Never Be Defeated



On March 28 2025, a strong 7.7 magnitude earthquake struck the northeastern part of Mandalay, with its epicenter located in the region. Due to the earthquake, the fascist military junta declared a state of emergency in the six regions (Sagaing, Magway, Mandalay, Bago, Shan, and Nay Pyi Taw).

We urge all progressive and democratic forces to stand with the oppressed people of Burma affected by the earthquake. It is important to send aid and support directly to the people affected.

Long Live International Solidarity The People United Will Never Be Defeated

Originally posted on abfsu.org